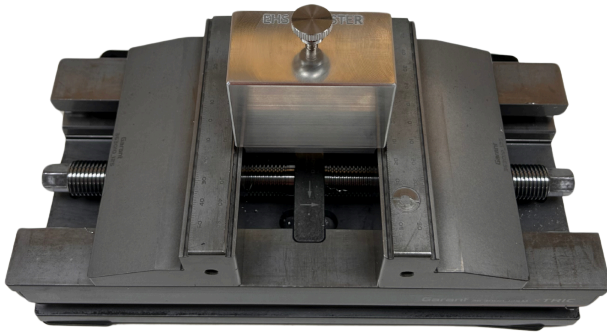
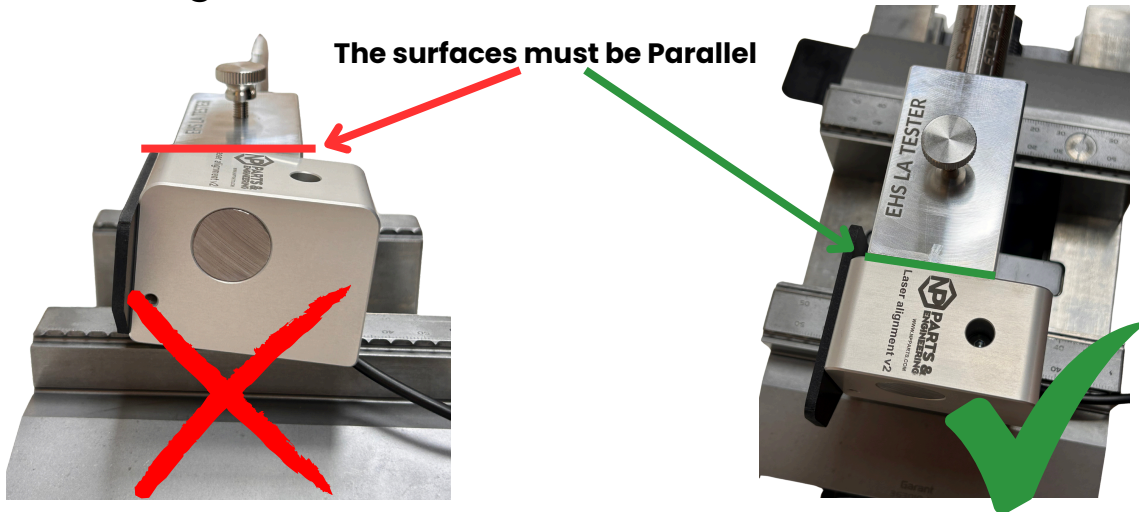


LASER ALIGNMENT MODULE TESTING

1. Place your laser alignment TESTER in a VICE



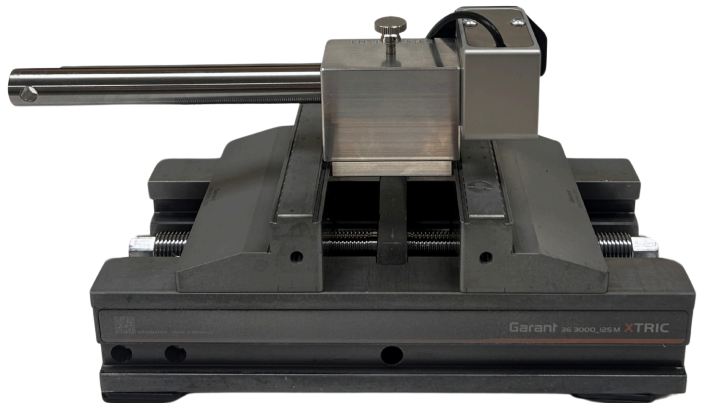
2. Insert laser alignment module and make sure the surfaces are parallel!



3. Connect the laser alignment module to the battery box and mark the line

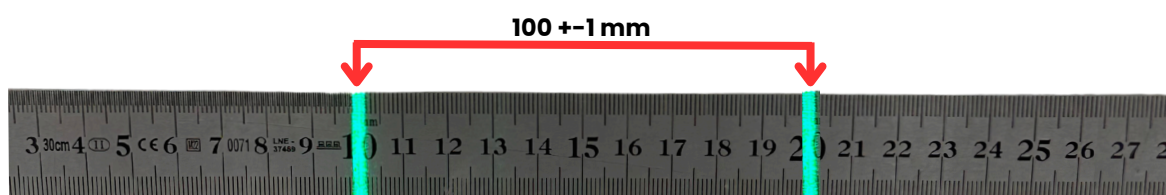


Insert the laser and mark the laser line



Rotate laser module 180 degrees and insert from the other side

4. Measure the distance between both laser lines



The gap must be 100 millimeters, otherwise laser alignment modules requires calibration

NOTE: The laser target (In this case a ruler) must be 3 meters away from the laser module while measuring